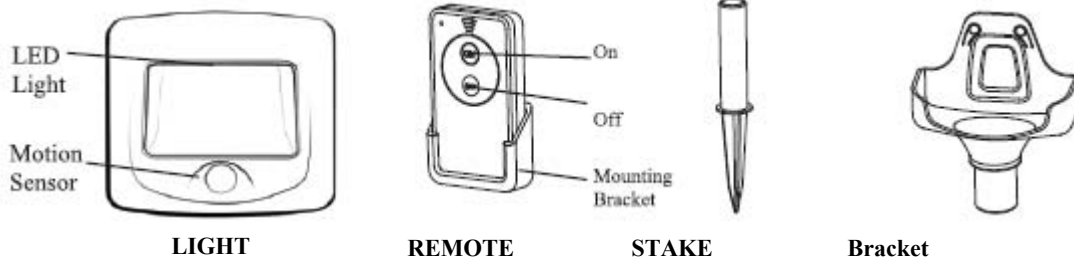


## Remote Control Path Light – Item PMB542 INSTRUCTION GUIDE



Thank you for purchasing the Mr. Beams™ Remote Control & Motion Sensor Path Light. We are committed to eliminating darkness by using the latest in light-emitting diodes (LED's). LED's are the most efficient and durable light sources available. We are certain that your Motion Sensor Path Light will contribute to a safer environment and provide light where you need it at a very reasonable cost.

### ENCLOSED YOU WILL FIND:

- Motion Sensor Path Light x 2
- Remote Control with Mounting Bracket
- Stake and Bracket x 2
- Double-Sided Tape x 2
- 2 Screws and 2 Anchors x 2

### PMB542 PATH LIGHT FEATURES

**Low-Glow** – Your Path Light glows automatically when in darkness to show you its location.

**Remote Control and Motion Sensor Activated** – Once motion is detected, your Motion-Sensor Path Light lights up brightly. Light shuts off automatically if no motion is detected after the set time and returns to Glow Mode. You can also control Path Lights with a Remote Control.

**Light Sensor** – Motion-Sensor Path Light goes on only in darkness to conserve battery life.

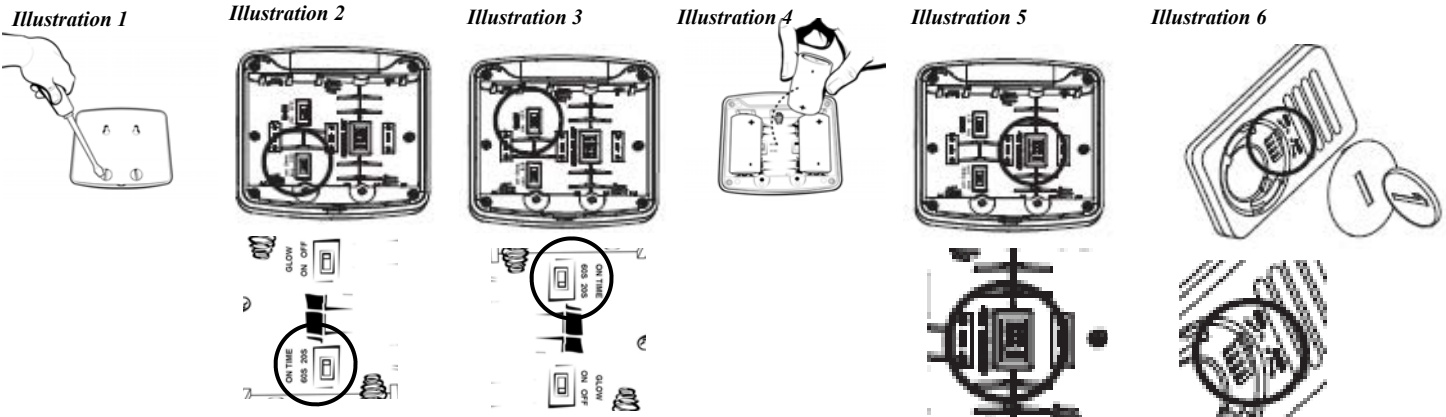
**Weatherproof** – Motion-Sensor Path Light can be mounted outside or inside.

### WARNING

- Please use only new alkaline or lithium C-Cell batteries with 1.5V rating. Do not mix old and new batteries. Install batteries with polarity in correct position.
- Please follow battery instructions for proper disposal and cautions.
- Please mount fixture securely with included screws if mounting to a surface, and use anchors if not securing to solid wood or other solid material.

## INSTALLATION INSTRUCTIONS

### BEFORE YOU MOUNT YOUR STAIR LIGHT



1. Remove rear cover of Path Light by removing 2 screws on back (**Illustration 1**).

2. Set auto shut-off to 20 seconds or 5 minutes as shown in **Illustration 2**. **Setting to 20 seconds will extend battery life.**

3. Set "GLOW" to 'On' if you want it to glow all night or 'Off' for no glow. Setting to 'Off' will extend battery life.

4. Insert 3 C-Cell Batteries into Stair Light as shown in **Illustration 4**.

5. Open the Remote Control and confirm that the code matches the code set on the Path Light (**Illustrations 5 & 6**).

6. Replace cover. Test by taking it into a dark room.

### NOTES:

Please use only new alkaline or lithium C-Cell batteries with 1.5V rating  
Do not mix old and new batteries

Install batteries with polarity in correct position as shown

Path Light may take up to 30 seconds to activate the first time after batteries are changed

Path Light equipped with a light sensor so it only alights in total darkness

Distributed by:



[www.PegasusLighting.com](http://www.PegasusLighting.com)

800.392.4818

## MOUNTING YOUR PATH LIGHT ON WALL

- If Mounting Inside, We Recommend Using Double-Sided Tape (Applied as shown in *Illustration 10*)
- If Mounting Outside, Please Follow These Instructions:

*Illustration 7*



1. Determine location for mounting Path Light. Flip rear cover upside down and **use holes for thumb screws as template** to mark two holes for anchors and/or screws (included) as shown in **Illustration 7**. We recommend mounting the screws parallel to the ground if mounting on a vertical surface. Make sure that screws are precise distance from each other as defined by the distance of the thumbscrew holes. Replace rear cover and insert screws.

*Illustration 8*



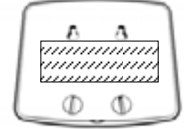
*Screw heads should protrude 1/8" from surface*

2. If using anchors, use 3/16" drill bit to drill holes and insert anchors. Drive screws into anchors so that screw head protrudes 1/8" from the surface (the height of the screw head— **Illustration 8**). If using screws only, use 1/8" drill bit to drill holes and insert screws so that screw head protrudes 1/8" from the surface (the height of the screw head).

*Illustration 9*



*Illustration 10—Indoor Use*

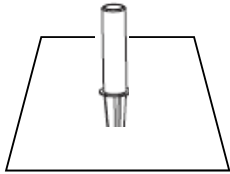


3. Slide Path Light down so screws are securely held by track (**Illustration 9**).

**Please Note:** If GLOW is set on "ON" your Path Light will emit a very low glow once it detects darkness. This low light will continue throughout the darkness. When the Stair Light detects motion it will emit a bright light and will continue on bright until no motion is detected. At that point it will go back into "GLOW" mode.

## MOUNTING YOUR PATH LIGHT USING STAKE AND BRACKET

*Illustration 11*



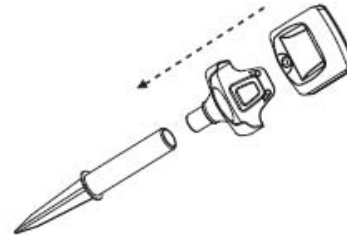
Insert Stake into ground by twisting it and pushing it down or digging a hole (**Illustration 11**).

*Illustration 12*



Insert Path Light into Mounting Bracket as shown in **Illustration 12**

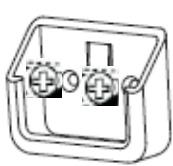
*Illustration 13*



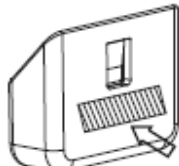
Insert Mounting Bracket into Stake as shown in **Illustration 13**

## MOUNTING YOUR REMOTE CONTROL

*Illustration 14*



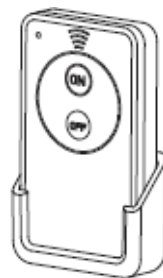
Screws



Tape Placement

Determine placement for bracket and attach to wall using two screws (enclosed) or tape as shown in **Illustration 14**

*Illustration 15*



Slide Remote into Bracket as Shown in **Illustration 15**

**Note:** Hold down On and Off buttons for **one second** to control light.

## LIMITED WARRANTY

The product you have purchased is guaranteed against defects in workmanship and materials for the period stated on the package. Warranties implied by law are subject to the same time period limitation. Some states do not allow limitations on how long an implied warranty lasts, so this time limitation may not apply to you. If the product fails due to a manufacturing defect during normal use, return the product and dated sales receipt to the store where purchased for replacement OR send the product and the dated sales receipt to the address above. **Not Covered** – Batteries are not covered by this warranty. Repair service, adjustment and calibration due to misuse, abuse or negligence are not covered by this warranty. Unauthorized service or modification to this product or of any furnished components will void this warranty in its entirety. This warranty does not include reimbursement for inconvenience, installation, set-up time, loss of use, postage, unauthorized service, or other products used in conjunction with, but are not supplied by, Wireless Environment.

**This warranty gives you specific legal rights, and you may also have other rights which vary from state to state.**